

## 7. System Requirements scanCONTROL Software

- Windows 7 (32 bit and 64 bit), Windows 8 (32 bit and 64 bit)
- Pentium III ≥ 800 MHz / 512 MB RAM
- Screen resolution: 1024x768

## 8. Quick Start: Commissioning, Software

➔ Install the software.



Please insert the scanCONTROL Demo CD in the CD-ROM device. Follow the dialog through the installation process.

A. Reading of installation help

B. Installation of software

C. Further informations in the online documentation

➔ Mount the sensor according to the installation instructions.

➔ Connect the sensor and the PC to the Ethernet or FireWire cable.

➔ Connect the sensor with subsequent display and monitoring units.

➔ Connect the sensor to the power supply.

The connectors for the operating voltage, switching signals, FireWire and Ethernet are fitted with push-pull locking.

➔ Pull apart at the grip to release the connection.

➔ Connect the shield of the power supply cable to the PE protective earth conductor of the main power supply. Close plug-in connections not needed with the supplied protective caps for ODU sockets. Switch on the power supply (24 VDC).

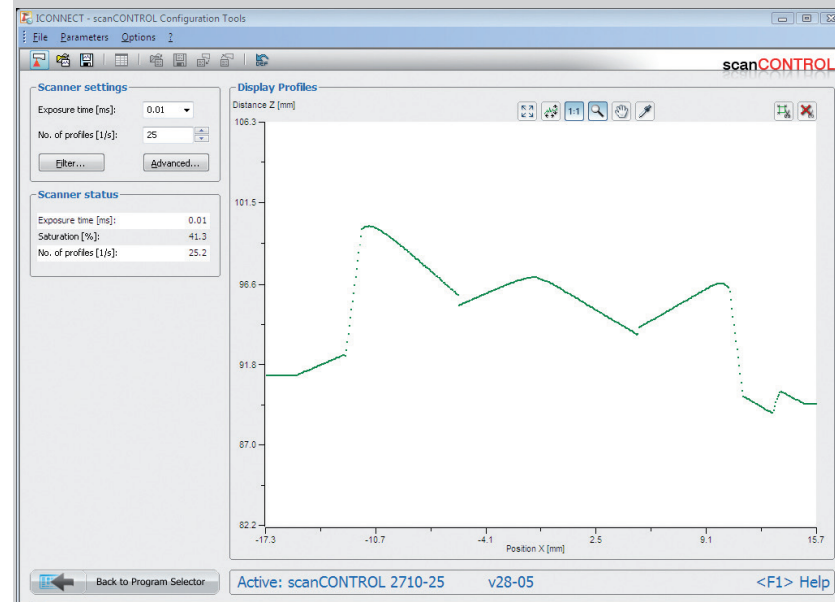
Only connect the sensor to the peripheral equipment, if it is disconnected from the power supply, i.e. only when the operating voltage is switched off. The sensor needs a warm-up time of typically 20 minutes for high precision measurements.

➔ Install the drivers for the measuring system according to the instructions on the supplied CD-ROM ([CD]:\Documentation\english\Installation\index.html).

## 9. First Profile

➔ Now start the Configuration Tools Software. Click on “Display Profiles” in the main window.

If the software shows the error message “No scanCONTROL found” in the status line, please check the Ethernet or Firewire connection between scanCONTROL and PC.



On the left side you can adjust the settings for your measurement task, the right side shows the profile data and information about the measurement.

## 10. How to Access Profile Data

Profile data of scanCONTROL can be accessed via:

- GigEVision and GenICam for digital cameras via Ethernet
- DCAM standard v.1.30 for digital cameras via FireWire interface
- SDK for fast application integration (C, C++ and others)

For details refer to the enclosed online manuals.

## 11. Further Information

Please refer to

- the enclosed online manual
- the section “Status and Error Messages” and “Notes” in the scanCONTROL Configuration Tools manual.

You will find details to the separate programs in the respective instruction manuals or in the instruction manual of this sensor, Chap. 6.2. You will find the instruction manuals online or on the provided CD.



## Assembly Instructions

### scanCONTROL 2750



## 1. Warnings

Connect the power supply and the display-/output device in accordance with the safety regulations for electrical equipment. The power supply may not exceed the specified limits.

> Danger of injury, damage or destruction of the sensor

Avoid shock and vibration to the sensor. Avoid continuous exposure to dust and spray on the sensor. Avoid exposure to aggressive materials (e. g. washing agent, penetrating liquids or similar) on the sensor.

> Damage to or destruction of the sensor

Read the detailed instruction manual before operation of the sensor. You will find this online at [www.micro-epsilon.com](http://www.micro-epsilon.com) or on the provided CD.

## 2. Notes on CE Identification

The following applies to the scanCONTROL 2750:

EU directive 2004/108/EC and EU directive 2011/65/EC, “RoHS” category 9

Products which carry the CE mark satisfy the requirements of the quoted EU directives and the European standards (EN) listed therein. The EC declaration of conformity is kept available according to EC regulation, article 10 by the authorities responsible at

MICRO-EPSILON MESSTECHNIK GmbH & Co. KG  
Königbacher Straße 15 94496 Ortenburg /Germany

The measuring system is designed for use in industry and satisfies the requirements.

## 3. Proper Environment

- Protection class: IP 65
- Operating temperature: 0 to +50 °C (+32 to +122 °F), by free circulation of air
- Storage temperature: -20 to +70 °C (-4 to +158 °F)
- Humidity: 5 - 95 % (non condensing)
- Vibration: DIN EN 600068-2-6 (sine shaped)
- Mechanical shock: DIN EN 60068-2-29

## 4. Standard Equipment scanCONTROL 2750

- 1 Sensor scanCONTROL 2750 with integrated controller
- 1 Power supply cable PC2700-4.5, length 4.5 m; ODU round connector and free cable ends
- 1 scanCONTROL Demo-CD with drivers, programs and documentation
- 1 Sensor inspection log / assembly instructions
- 1 Bag of accessories with one ODU male connector 6-pin (RS422), S31BQC-P06MF-GO-6000 and two protective caps for ODU female connector (6- or 8-pin)

[www.micro-epsilon.com](http://www.micro-epsilon.com)

MICRO-EPSILON Messtechnik GmbH & Co. KG

Königbacher Str. 15

94496 Ortenburg / Germany, Tel. +49 (0) 85 42 /168-0



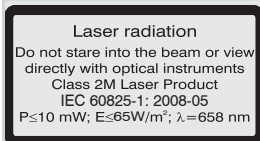
X9771182.002-A021105HDR

## 5. Laser Class

The scanCONTROL 2750 sensors operate with a semiconductor laser having a wavelength of 658 nm (visible/red). The laser operation is indicated visually by the LED on the sensor.

### Laser Class 2M

scanCONTROL 2750 sensors with a maximum laser power up to 10 mW are classified in Laser Class 2M (IIM). The following information labels are fitted to the sensor housing (front and rear side). If both information labels are hidden in the installed state, the user must ensure that additional labels are fitted at the point of installation.



### CAUTION

Hazard to the eye via laser radiation! Consciously close your eyes or turn away if the laser radiation impinges on the eye.

Lasers of Class 2M are not subject to notification and a laser protection officer is not required. Mark the laser area recognizable and everlasting.

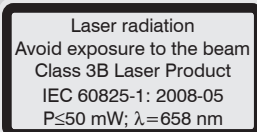
### Laser Class 3B

scanCONTROL 2750 sensors with a maximum laser power up to 20 mW are classified in Laser Class 3B (IIIB).

### CAUTION

Injury to the eye or the skin via laser radiation! Consciously close your eyes or turn away if the laser radiation impinges on the eye or the skin.

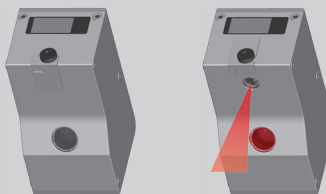
Class 3B (IIIB) laser sensors are notifiable and a laser protection officer is required either. During operation the laser area has to be restricted and marked. The following information label should be fitted to the sensor housing (front and rear side):



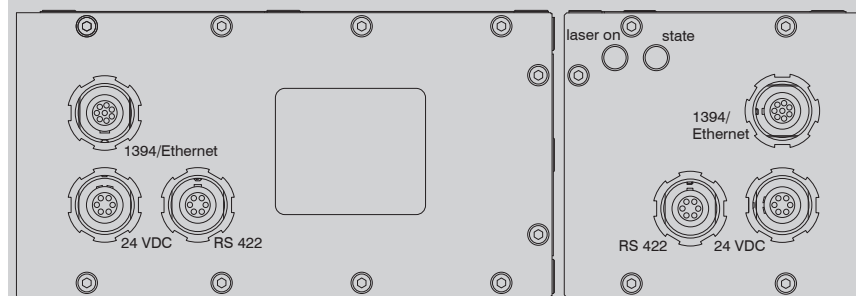
Sensors of Laser Class 3B (IIIB) need an external key switch to switch off the laser, see Chap. "Laser switching".

### Beam attenuator

The beam attenuator prevents access to all laser and collateral radiation. The figures show the sensor with closed and open beam attenuator. The beam attenuator must be open during measurement.



## 6. Connections, LED Displays



LLT2750-x, top side

LLT2750-x(001), rear side

The sensors are available in two versions: Sockets on the top side or on the rear side.

### LED displays

LED "laser on"	Green: Laser on	Note: The "status" LED flashes green; long during active data transmission and short for controller accesses.
LED "state": Two-color LED (red / green)	Green: Measurement Green flashing: Data transmission Red flashing: Error code	

The state LED indicates different error conditions by flashing. If no flashing occurs for several seconds, no error has occurred.

### Power supply (Power)

Pin no.	Assignment connector "24 VDC"						Range: 11 V – 30 V (Rated value 24 V) DC; maximum current 500 mA
	Standard Color PC2700; old version in ( )			Options 002, 003, 004, 005 Color PC2700(002)			
1	24 V+	white	(red)	24 V+	pink	<p>View on solder pin side, male cable connector, counting direction anti-clockwise</p>	
2	Laser help	n.c.	n.c.	LH+	grey		
3	Laser on/off	n.c.	n.c.	Laser off+	yellow		
4	Laser on/off	n.c.	n.c.	Laser off-	green		
5	Laser help	n.c.	n.c.	LH-	brown		
6	24 V GND	brown	(black or blue)	24 V GND	white		

The power supply is also possible using the FireWire connection cable, if the power supply needed is present in the PC with sufficient current intensity. When both voltages (1394 and power) are present, the higher voltage always takes over the supply of the sensor.

## External laser switching

Series LLT2750-x(002), LLT2750-x(003), LLT2750-x(004) and LLT2750-x(005) sensors offer this function.

Sensors of Laser Class 3B (IIIB) need an external key switch to switch off the laser.

Use a serial key switch inside the control circuit to switch off the laser. You will find details for the wiring in the instruction manual, Chap. 5.2.4.

### RS422, Synchronization

Pin no.	Assignment connector "RS422"			<p>View on solder pin side, male cable connector</p>	The Pin numbers refer to the scanCONTROL 2750 unit.  Micro-Epsilon recommends the use of the interface cable SC2700-4.5 RS422 from the optional accessories.
	RS422	General	9-pin Sub-D¹		
1	RX1	CH1	2		
2	/RX1	/CH1	3		
5	GND1		5		
3	TX2	CH2	9		
4	/TX2	/CH2	1		
6	GND2		5		

The RS422 port can be used with either of the following configurations:

- RS422: Loading of programs and transmitting of measurement results.
- Synchronization/Triggering: Synchronization resp. triggering using switching signals.

1) Optional RS422 interface cable (SC2700-4.5RS422) from Micro-Epsilon, compatible to the RS422 to USB converter. All outputs or inputs are designed symmetrically. Internal terminating resistors 120 Ohm.

### FireWire connection (1394), Standard link to PC ¹

8-pin connector, ODU		6-pin connector, FireWire		Connector "1394"
Pin no.	Assignment	Pin No.	Assignment	
1	GND_FireWire	2	GND_FireWire	The PIN numbers refer to the scanCONTROL 2750 unit.  Micro-Epsilon recommends using the FireWire connection cable SC2700-4.5 FireWire from the recommended accessories.
2	TPA+	4	TPB+	
3	TPA-	3	TPB-	
4	Screen	2	GND_FireWire	
5	TPB-	5	TPA-	
6	TPB+	6	TPA+	
7	Screen	2	GND_FireWire	
8	+24 V_FireWire	1	+24 V_FireWire	

View on solder pin side

View on solder pin side

The scanCONTROL 2750 sensor can also be supplied with operating voltage from the PC on the Firewire connection socket. If its capacity is not sufficient, an appropriate voltage must be connected to the 24 VDC socket.

Use the recommended FireWire connection cable.

A power supply via free colors in the FireWire connection cable is possible if these wires are connected in the PC (Pin 1 to +8 ... 30 V DC, typically 12 V DC; Pin 2 to ground on the FireWire connector).

### Ethernet connection, standard link to the PC ¹

RJ45 connector		8-pin. connector ODU			The pin numbers refer to the scanCONTROL 27x0 unit.  Micro-Epsilon recommends using the Ethernet connection cable SC2700-5/ET from the recommended accessories.
Pin no.	Color stranded hook-up wire	Pin no.	10BaseT, 100BaseTX	1000BaseT	
1	white (orange)	5	Tx+	D1+	
2	orange	6	Tx-	D1-	
3	white (green)	8	Rx+	D2+	
4	blue	1		D3+	
5	white (blue)	2		D3-	
6	green	7	Rx-	D2-	
7	white (brown)	3		D4+	
8	brown	4		D4-	

View: pin side male cable connector

View on solder pin side, ODU

- The sensor supports an automatic, sensor adapted IP address in the link-local-net (169.254.x.x). There is no collision testing effected. This is the standard setting.
- The sensor supports DHCP protocol. This setting is activated by default and has priority over the retrieval in the link-local-net.
- A fixed IP address can be used.

Use the "Ethernet Configurator" software provided on the CD in order to make the sensor settings described above.

1) The sensor is supplied as either a Firewire version or Ethernet version.